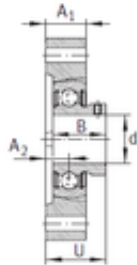
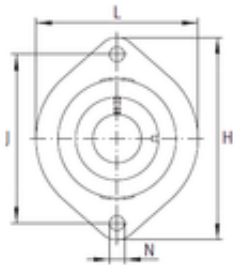




# CSC BEARING GROUP limited

## INA FLCTEY25 Bearing unit



Bearing No. FLCTEY25

FLCTEY25 Bearing 2D drawings and 3D CAD models

Bore Diameter	25 mm
Width	27 mm
d	25 mm
U	29,4 mm
A1	17,5 mm
B	27 mm
H	97 mm
J	76,2 mm
L	71 mm
N	9 mm
A2	9,9 mm
Weight	0,44 Kg
Basic dynamic load rating (C)	14 kN
Category	Flange Block Bearings
Inventory	0.0
Manufacturer Name	SCHAEFFLER GROUP
Minimum Buy Quantity	N/A
Weight / Kilogram	0.44
EAN	4012802787825
Product Group	M06110
Number of Mounting Holes	2
Mounting Method	Set Screw
Housing Style	2 Bolt Flange Block
Rolling Element	Ball Bearing
Housing Material	Cast Iron
Expansion / Non-expansion	Non-expansion



## CSC BEARING GROUP limited

Mounting Bolts	9 Millimeter
Relubricatable	No
Insert Part Number	AY25NPPB
Seals	Double Lip Contact
Housing Configuration	1 Piece Solid
Pilot Configuration	No Pilot
Inch - Metric	Metric
Long Description	2 Bolt Flange Block; 25MM Bore; 76MM Bolt Circle; 76.2MM Bolt Spacing; 1 Piece Solid; Set Screw Mount; Cast Iron; Ball Bearing; 27MM Length Thru Bore; No Relubricatable; Double Lip Contact Seals
Other Features	Single Row   Small Center Bolt   With Grub Screw
Category	Flange Block
UNSPSC	31171501
Harmonized Tariff Code	8483.20.40.40
Noun	Bearing
Keyword String	Flanged
Manufacturer URL	<a href="http://www.ina.com">http://www.ina.com</a>
Manufacturer Item Number	FLCTEY25
Weight / LBS	0.97
Bore	0.984 Inch   25 Millimeter
Nominal Bolt Circle Diameter Round	3 Inch   76 Millimeter
Length Thru Bore	1.063 Inch   27 Millimeter
Cartridge Pilot Depth	0 Inch   0 Millimeter
Cartridge Pilot Diameter	0 Inch   0 Millimeter
Bolt Spacing	3 Inch   76.2 Millimeter