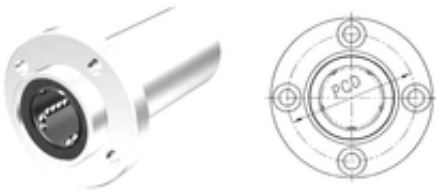


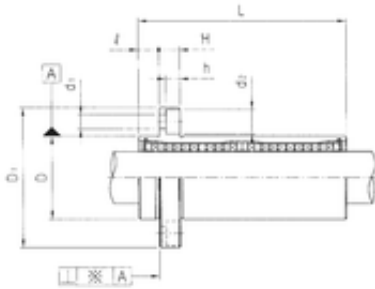


CSC BEARING GROUP limited



Samick LMFP35LUU Linear bearing

Bearing No. LMFP35LUU



LMFP35LUU Bearing 2D drawings and 3D CAD models

| | |
|--------------------------------|------------------|
| Bore Diameter | 35 mm |
| Outer Diameter | 52 mm |
| d | 35 mm |
| D | 52 mm |
| d1 | 6,6 mm |
| d2 | 11 mm |
| h | 6,5 mm |
| D1 | 82 mm |
| H | 10 mm |
| L | 135 mm |
| PCD | 67 mm |
| | 10 Tolerance h14 |
| Tolerance perpendicularity (C) | 25 |
| Weight | 0,97 Kg |
| Basic dynamic load rating (C) | 2,65 kN |