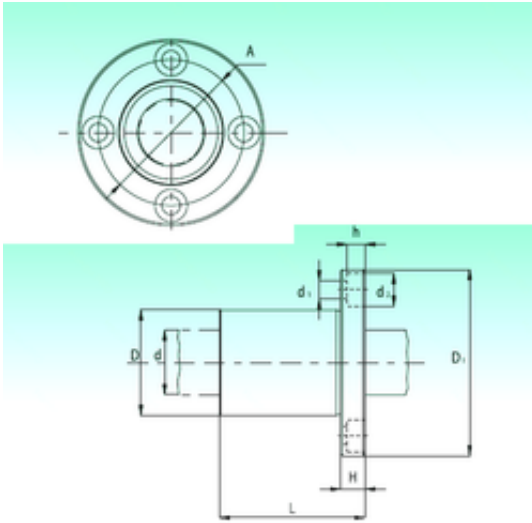




# CSC BEARING GROUP limited



KBF50 Bearing 2D drawings and 3D CAD models

## NBS KBF50 Linear bearing

Bearing No. KBF50

Bore Diameter	50 mm
Outer Diameter	75 mm
d	50 mm
D	75 mm
d1	9 mm
d2	14 mm
h	8,6 mm
A	94 mm
D1	112 mm
H	13 mm
L	100 mm
Weight	1,73 Kg
Basic dynamic load rating (C)	3,9 kN