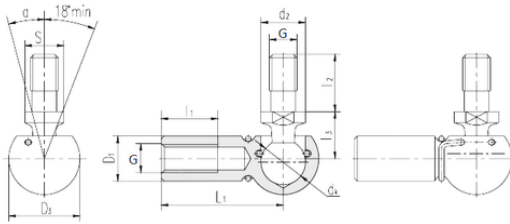




# CSC BEARING GROUP limited



## LS SQG6 sliding bearing

Bearing No. SQG6

d2	10 mm
dk	10 mm
l1 min.	11,5 mm
l2 max.	12,5 mm
l3 min.	11 mm
D1	10 mm
D3	14,8 mm
L1	25 mm
S	8 mm
Thread (G)	M6
Angle	15 °
Weight	0,025 Kg

SQG6 Bearing 2D drawings and 3D CAD models